

## 621.311.1

••••• , . . . , „ ,  
••••• , . . . , „ ,

**0,38**

-

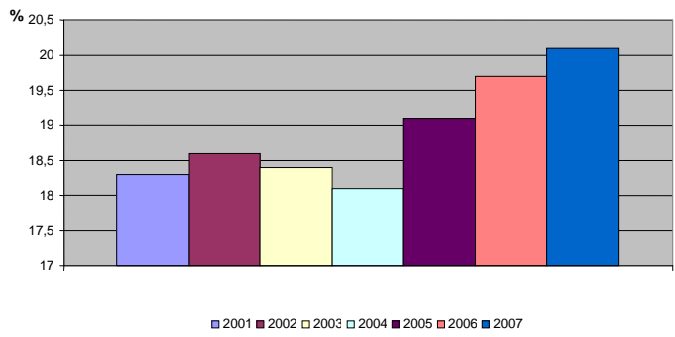
In the article the analysis of consumption and losses of electric power by communal general users is carried out. Are proposed to way measures for reduction in the losses, taking into account contemporary operating conditions.

-  
.  
, .  
-  
.  
.  
.  
-  
, -  
.  
, -  
30%  
,  
:  
• ;  
• ;  
• ;  
• ;  
- .  
, ( 20 ) ( 67% ) ,  
,  
:  
• ;

- 0,4 ;
- ;
- 0,4 ;
- 0,4 - ,

[1,2] ( .1)

2011 [3] 25,6%.



.1.

:

- , ( 10 ) ,

);

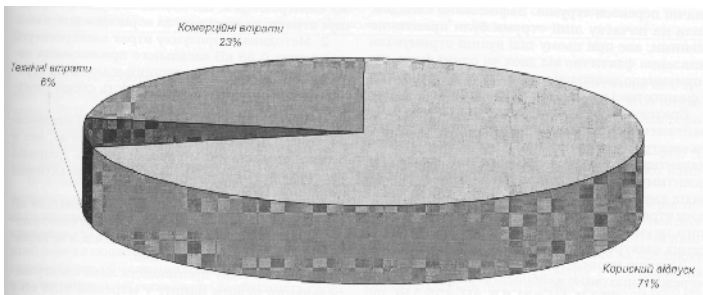
- , ( , );

- , : ( . . ) , , ,

, , ,

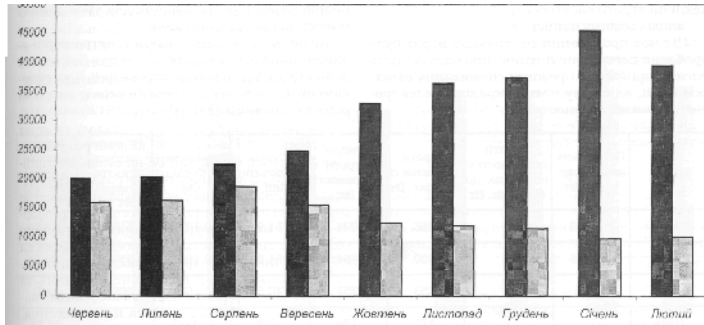
- , , ,

. 2



. 2. 0,38

. 3 0,38 9



.3.

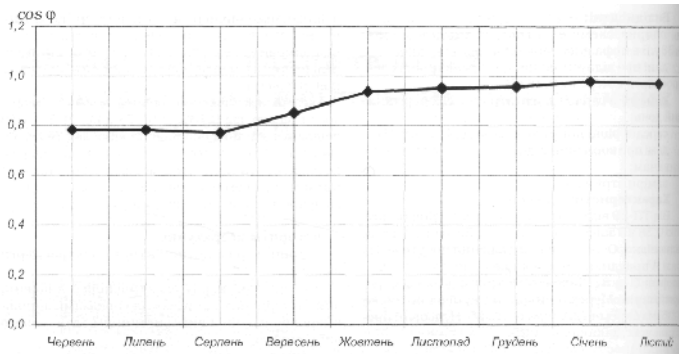


0,38

0,769

0,978 ( . 4).

cos



.4.

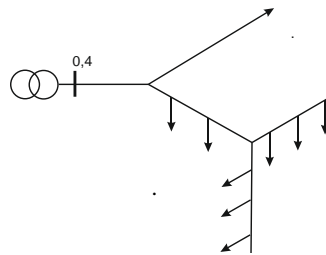
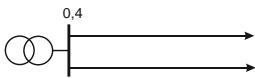
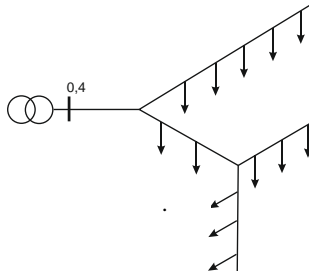
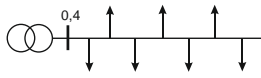
cos

1,05—1,1,

1,4

14 %.

( .5).



.5.

( );

( );

( );

1. : 0,38
2. .
3. 0,38 . 0,38
4. , .

: 1. <http://www.energyexpert.com.ua>. 2. . . .  
 // . - / 2008. - " 4. - .47-52.  
 3. <http://bin.ua/news/economics/faec> - 11.01.2012 ( ).



».  
 « 1995 .  
 2002 . « ”.  
 “ ”.  
 , .



».  
 « 2003 .  
 2009 . “ ”.  
 “ ”.  
 , .